

StiCol® Volume

- Microsphere PLLA
- Compositing of Microsphere PLLA
- Stimulates own skin to produce new collagen as a Bio-Stimulatory Dermal Filler
- Restore Facial Volume
- FDA and CE Approved Biodegradable Polymer PLLA

StiCol® VOLUME



Type	Volumized PLLA
Ingredient	365mg, PLLA 150mg / vial
Particle size	±50 micron
Injection layer	Subcutaneous layer
Indications	Volume Booster (Facial wrinkles&folds)
Needle and cannula	21-25G Cannula
Amount	8-9 cc (saline water, lidocaine)

How To Use

Reconstitution

Reconstitution can be performed the day before on the day of the procedure depending on the situation

	The day before the procedure	On the day of the procedure
Protocol	Add normal saline 24 hours before the procedure. Shake gently for 10 minutes before use.	Add normal saline and mix for 30-40 minutes with a roller mixer
Amount of Normal saline	We have a standard reconstitution guideline for each indication. But the amount of normal saline may differ depending on the operator's preference	
Others	When mixing anesthetics according to the operator's preference, 1 ml of normal saline can be removed and 1 ml of lidocaine can be added	

Fat Graft	1st Session	2nd Session	No. of Treatment	Depth of Injection	Technique
Forehead	1-2 vials	Same dose but if the volume increased excessively, half dose of 1st session	3 times at 4-6 week intervals	Subcutaneous layer or Periosteum or Hypodermis	Fan shape injection using cannula treading technique
Temporal Area	1-2 vials				
Cheek	1 vials				
Ant. zygomatic area	1 vials				
Nasolabial Fold	1 vials				

Duration up to 24 months

PT SK INTERPHARM

Aldeoz Cantina Lt. 07/ No. 45, Jl. Warung Jati Barat no. 39
RT/RW 010/004, Kalibata, Pancoran, Jakarta Selatan

✉ sales@skinterpharm.com ☎ 021-520-0046 📞 +62811-9002-9533
🌐 skinterpharm.id 🌐 www.skinterpharm.com

Official Distributor in Indonesia
SK Interpharm
A New Vibe for Skincare & Aesthetics

CONTAC

CONTAC

Own Natural
Collagen Stimulator
to Restore Its Inner Skin

StiCol®
VOLUME

Official Distributor in Indonesia

SK Interpharm

A New Vibe for Skincare & Aesthetic



CE 1434

ISO 6038



It is an injectable and biocompatible medical device and restores the volume lost by collagen lost due to age and tightens the skin.

Injectable Poly-L-Lactic Acid (PLLA) is a synthetic, biocompatible and biodegradable polymer device for correction of facial wrinkles and for restoration and correction of signs of facial fat loss.



Face Rejuvenation

Deep Dermal Deficiency
Face Wrinkles and Folds
Marionette Line
Temple
Sagging Jowls
Scarring

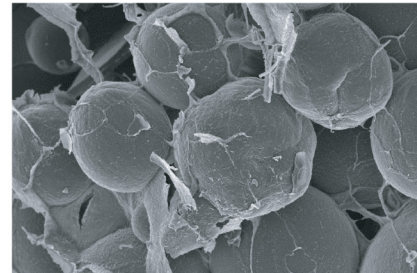
Body Rejuvenation

Dorsal Hands
Decolletage or Chest
Medial Arms
Abdomen
Inner Thigh
Gluteal Region (Buttocks, Hip Dips)

Safety of PLLA

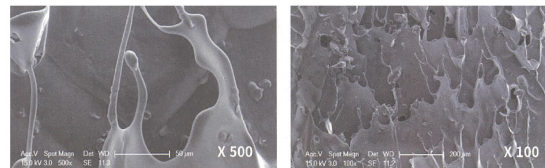
Injectable Poly-L-Lactic Acid (PLLA) has been proven safe and effective with numerous medical applications for more than 25 years. It is a synthetic biocompatible biodegradable and absorbable bio-stimulatory polymer and is being used for soft tissue augmentation in the face and certain body parts.

Its use of soft tissue augmentation to cosmetically correct wrinkles and scars were approved by Europe (CE) and FDA.



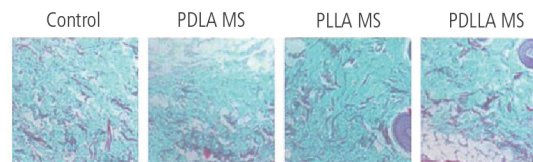
The morphology of its regular microsphere, smooth surface and the uniform of particle size greatly increases clinical results and its safety.

Safe Collagen Stimulator PLLA

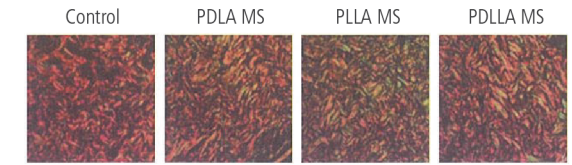


Superior Collagen Stimulator PLLA

Therefore, compared with PDLA MS and PDLLA MS, PLLA MS is a skin filling material with lower cost, lower side reaction, better filling effect and excellent collagen stimulating effect. Furthermore, PLLA MS can contain collagen and other substances that are beneficial to skin repair and collagen regeneration, which can be released slowly through PLLA degradation to achieve better cosmetic effect.



Collagen fiber, mucus and cartilage: Blue



Type I collagen: Red or Yellow

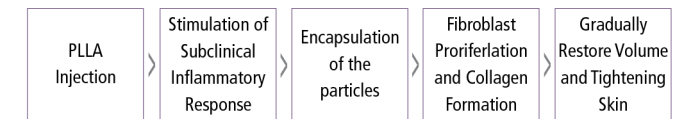
Type III collagen: Green

Histological analysis of collagen regeneration. (A) Masson staining and (B) Picrosirius red staining of the skin at the injection site of three kinds of PLA microsphere on Day 30. Type I collagen fibers are red or yellow, type III collagen fibers are green.

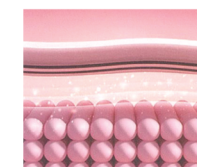
The content of type I collagen in the PLLA group was still 84.7%, and type III collagen was 15.1%. Total of type I and type III collagen were 1.4 times than the collagen in the PDLLA group. Which showed that PLLA MS has the most obvious effect on stimulating collagen regeneration, and it is indeed suitable for usage as dermal filler in comparison with the other two chiralities.

Mechanism of the Action

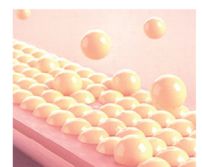
- Injectable Poly-L-Lactic Acid is used to create structure, framework, and volume to the face and body.
- PLLA is a safe and effective treatment for cosmetic enhancement by stimulating new collagen.
- Once the carrier solution is reabsorbed, a slow process of biodegradation of the microspheres occurs consisting of hydration, loss of cohesion and molecular weight, solubilization, and phagocytosis of small fragments of PLLA by the host's macrophages.
- PLLA is eventually degraded into lactic acid which is eliminated as CO₂ and H₂O through the respiratory system.



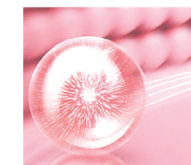
STEP 01
Inject diluted Sticoll into the subcutaneous layer of the skin



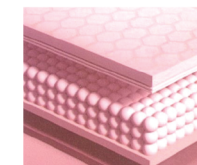
STEP 02
Firstly wrinkle improvement can be shown with WFI and diluted Sticoll



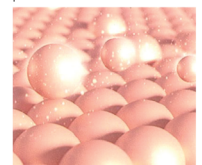
STEP 03
Within some days, after absorbing water, only Sticoll particles left



STEP 04
New cells are gathered around PLLA and increasing fibroblasts



STEP 05
Increased fibroblasts stimulate collagen generation and improve skin folds



STEP 06
Generated collagen lasts for 2 years and Sticoll particles are biodegraded